



2017 SAMSUN

23. SUMMER DEAFLYMPICS



TURKISH ORIENTEERING FEDERATION

JULY 18<sup>th</sup>-30<sup>th</sup> 2017



BULLETIN 1&2





2017  
SAMSUN  
XXIII.SUMMER  
DEAFLYMPICS



## TECHNICAL COMMITTEE

ICSD Technical Director	: Olga DULA
IOF Event Director	: Veysel GÜLER

MAP	<ol style="list-style-type: none"><li>1. Tekkeköy (Sprint)</li><li>2. Samsun Merkez( Mix-Sprint)</li><li>3. Bayraktepe (Middle)</li><li>4. Kabadüz(Long distance)</li><li>5. Yeniköy (Relay)</li></ol> <p>TRAINING COURSE</p> <ol style="list-style-type: none"><li>1. Atakum (Sprint model)</li><li>2. Kabadüz (Long model)</li><li>3. Çatma Oluk (Middle model)</li></ol>
COURSE PLANNING	MEHMET KÜÇÜKÇOLAK VEYSEL GÜLER
COURSE CONTROL	İBRAHİM COŞKUN SÜLEYMAN ÖZBEK FIRAT CANIKLI

## IV. COURSE DETAILS

July 21<sup>st</sup>, Friday

## Deaflympics 1.day-Sprint , Tekkeköy

### Map



Scale: 1/4.000      Contour interval :2 m.

Mapper: Georgi Hadzhimitev-Valentin Garkov-Plamen Kirilov-Petar Doganov-Mehmet KÜÇÜKÇOLAK

The terrain is in the accommodation unit with containing inclination. There are confined spaces in the map. To pass/enter these area is reason for disqualification. To wear sprint shoes is recommended.

July 23<sup>rd</sup>, Sunday

## Deaflympics 2. Day-Sprint Relay (2 men +2 women), Samsun City Center

### Map



Scale : 1/4.000      Contour interval :2 m.

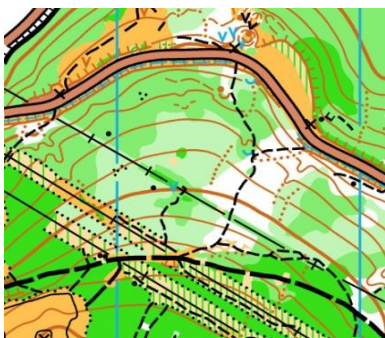
Mapper : Georgi Hadzhimitev- Plamen Kirilov-Petar Doganov

The terrain is in the city center with containing inclination. There are confined spaces in the map. To pass/enter these area is reason for disqualification. To wear sprint shoes is recommended.

July 25<sup>th</sup>, Tuesday

## Deaflympics 3. Day-Middle Distance, Bayrakepe

### Map



Scale: 1/10.000      Contour interval :5 m.

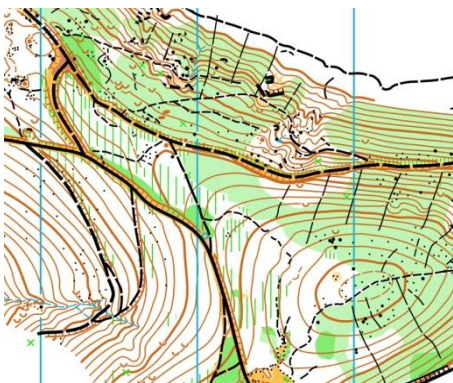
Mapper : Georgi Hadzhimitev-Valentin Garkov-Plamen Kirilov-Petar Doganov

The 90% of the terrain is forestland with drastic inclination that is hardly runnable. There exist thickets arena. There are many barely visible tracks. These kinds of paths require attention. Thorns can be seen. To wear long sleeve orienteering clothes and orienteering shoes are recommended.

July 27<sup>th</sup>, Thursday

## Deaflympics 4. Day-Long Distance, Kabadüz

### Map



Scale: 1/12.500

Contour interval :5 m.

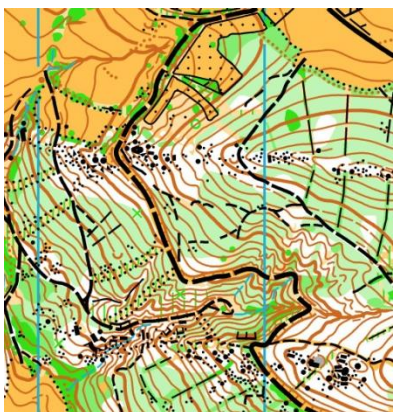
Mapper: Georgi Hadzhimitev-Valentin Garkov-Plamen Kirilov-Petar Doganov

The 90% of the terrain is forestland with drastic inclination that is hardly runnable. There exist thickets and stony ground in the arena. Thorns can be seen. To wear long sleeve orienteering clothes and orienteering shoes are recommended.

July 29<sup>th</sup>, Saturday

Deaflympics 5. Day-Relay, Yeniköy

Map



Scale: 1/10.000

Contour interval :5 m.

Mapper : Georgi Hadzhimitev-Valentin Garkov-Plamen Kirilov-Petar Doganov

The 95% of the terrain is forestland that is hardly runnable. There exist thickets and stony ground in the arena with drastic inclination. There are many barely visible tracks. These kinds of paths require attention. Thorns can be seen. To wear long sleeve orienteering clothes and orienteering shoes are recommended.

## ACCOMADATION

Accommodation will be held by the competition coordination team.

## VI.ANNOUNCEMENTS and OTHER TOPICS

Disqualification time, course distances and details and any other information will be shared in Bulletin 3. It will be held at 20<sup>th</sup> July after Technical Meeting.

Transportation information's will be announced on event website.

## VII. CONTACT INFORMATION

Turkish Orienteering Federation : +90 312 324 61 66

Fax : +90 312 324 61 88

Email : [info@orienteering.org.tr](mailto:info@orienteering.org.tr)

IOF Event Director :Veysel GÜLER +90 533 658 35 94